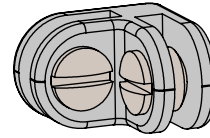
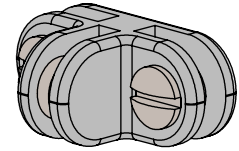


10" x 16" Glass Cubbies with Open Backs on Maple Base

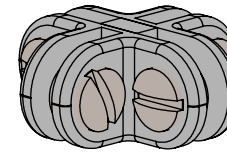
INCLUDED HARDWARE



8X
2-WAY CONNECTOR

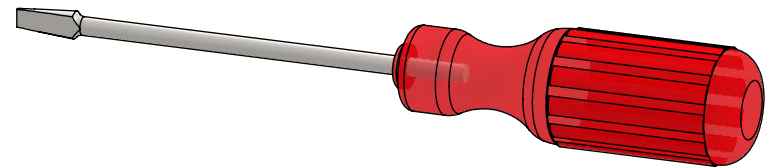


24X
3-WAY CONNECTOR

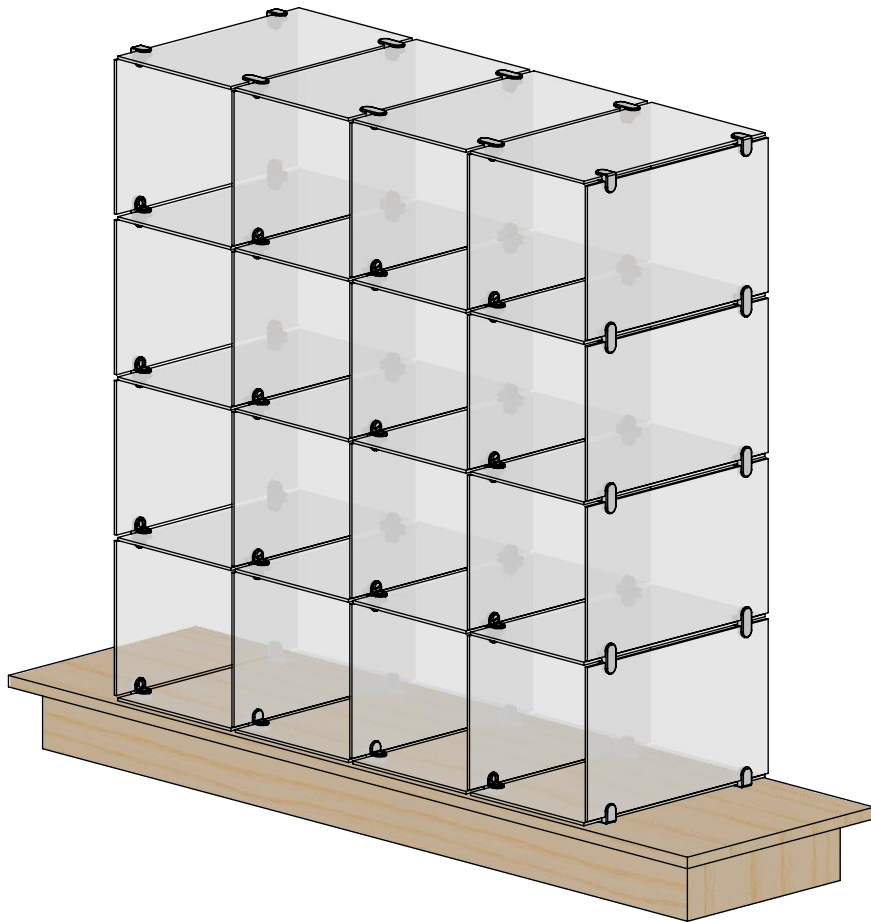


18X
4-WAY CONNECTOR

TOOLS REQUIRED



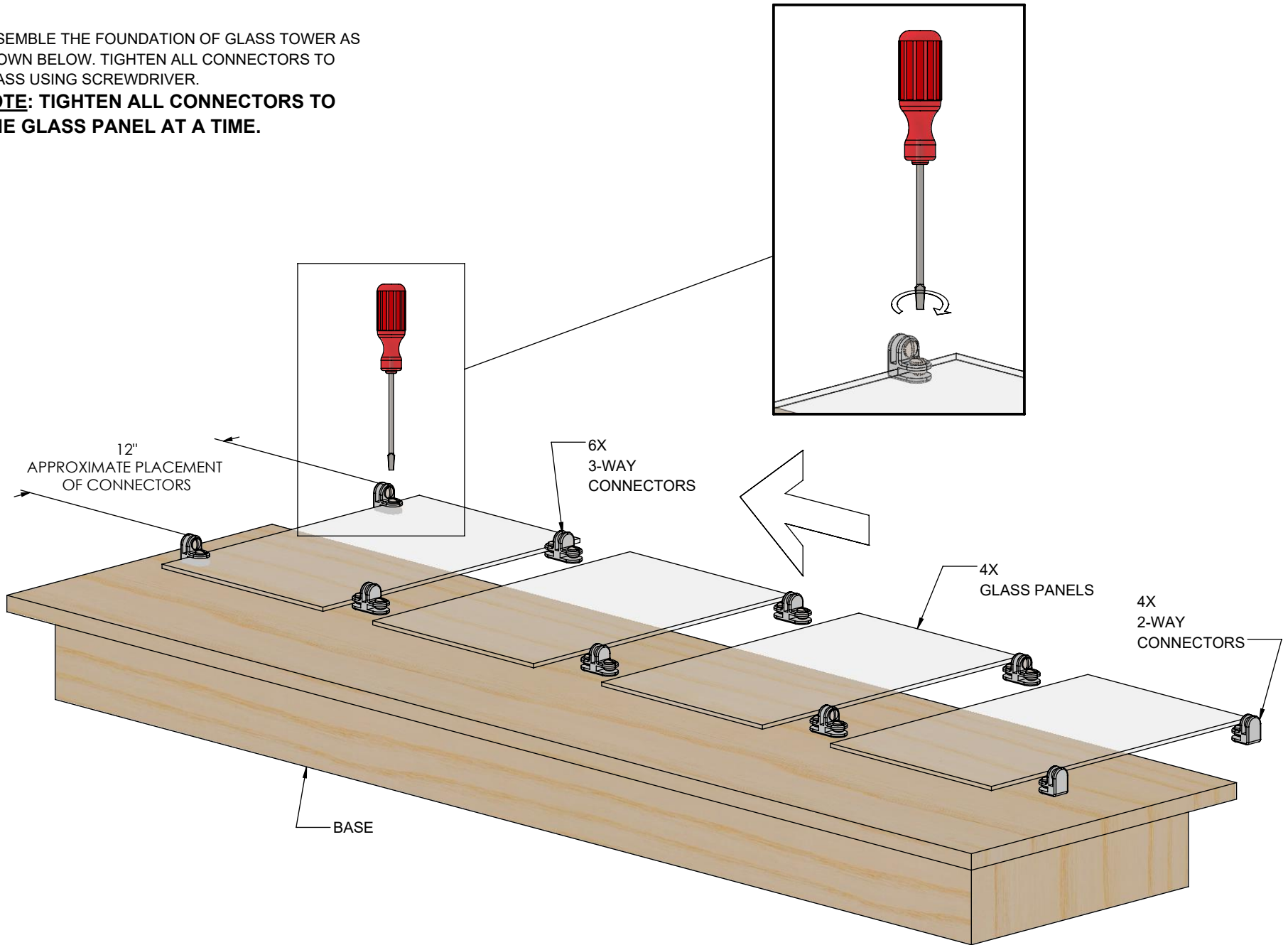
FLAT HEAD SCREWDRIVER



1

ASSEMBLE THE FOUNDATION OF GLASS TOWER AS SHOWN BELOW. TIGHTEN ALL CONNECTORS TO GLASS USING SCREWDRIVER.

NOTE: TIGHTEN ALL CONNECTORS TO ONE GLASS PANEL AT A TIME.

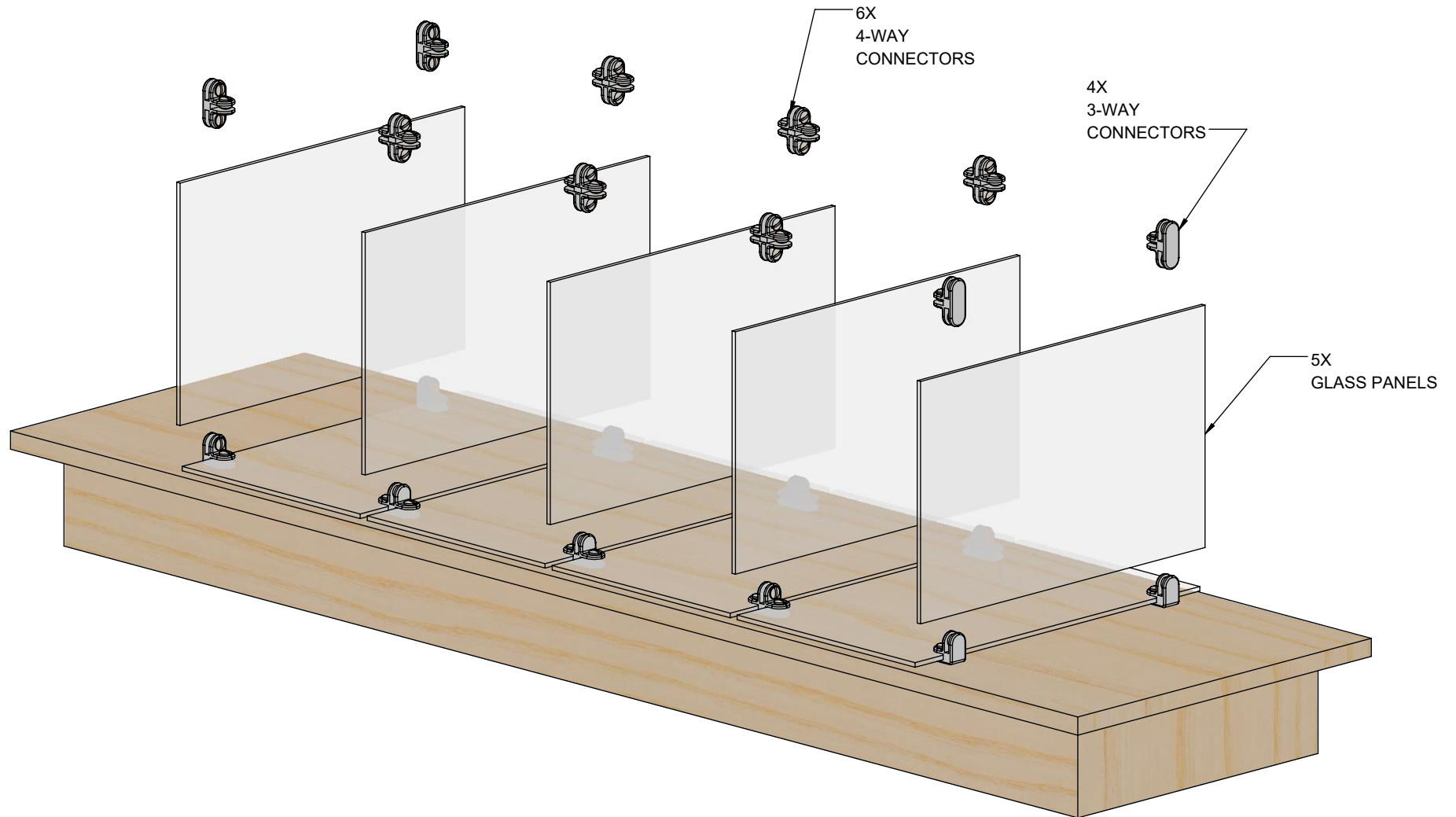


2

INSTALL THE FIRST ROW OF GLASS DIVIDERS AS SHOWN.

INSTALL 3-WAY AND 4-WAY CONNECTORS ONTO DIVIDERS AS SHOWN.

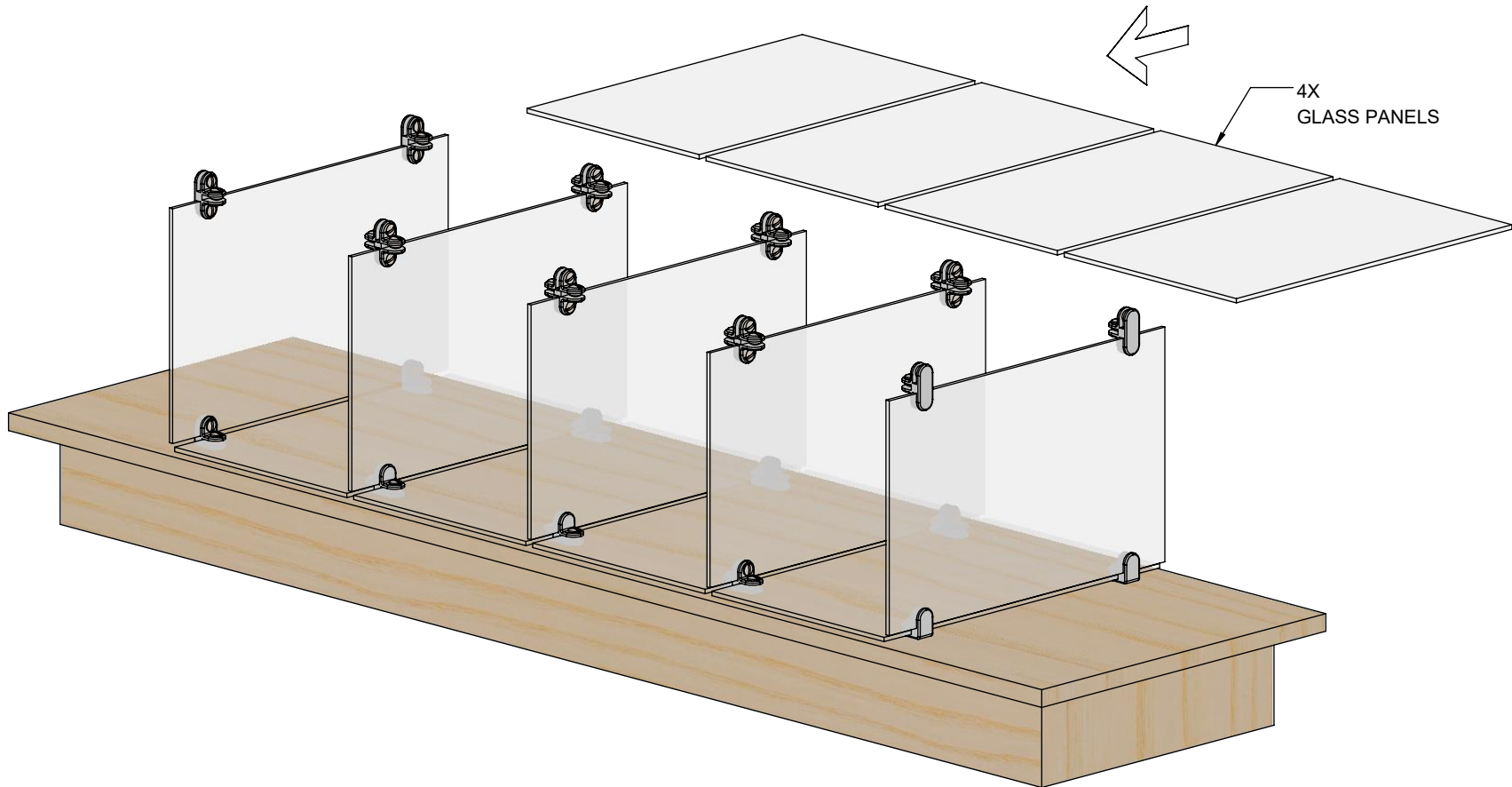
NOTE: TIGHTEN ALL CONNECTORS TO ONE GLASS PANEL AT A TIME.



3

SLIDE IN THE NEXT ROW OF GLASS SHELVES AS SHOWN.

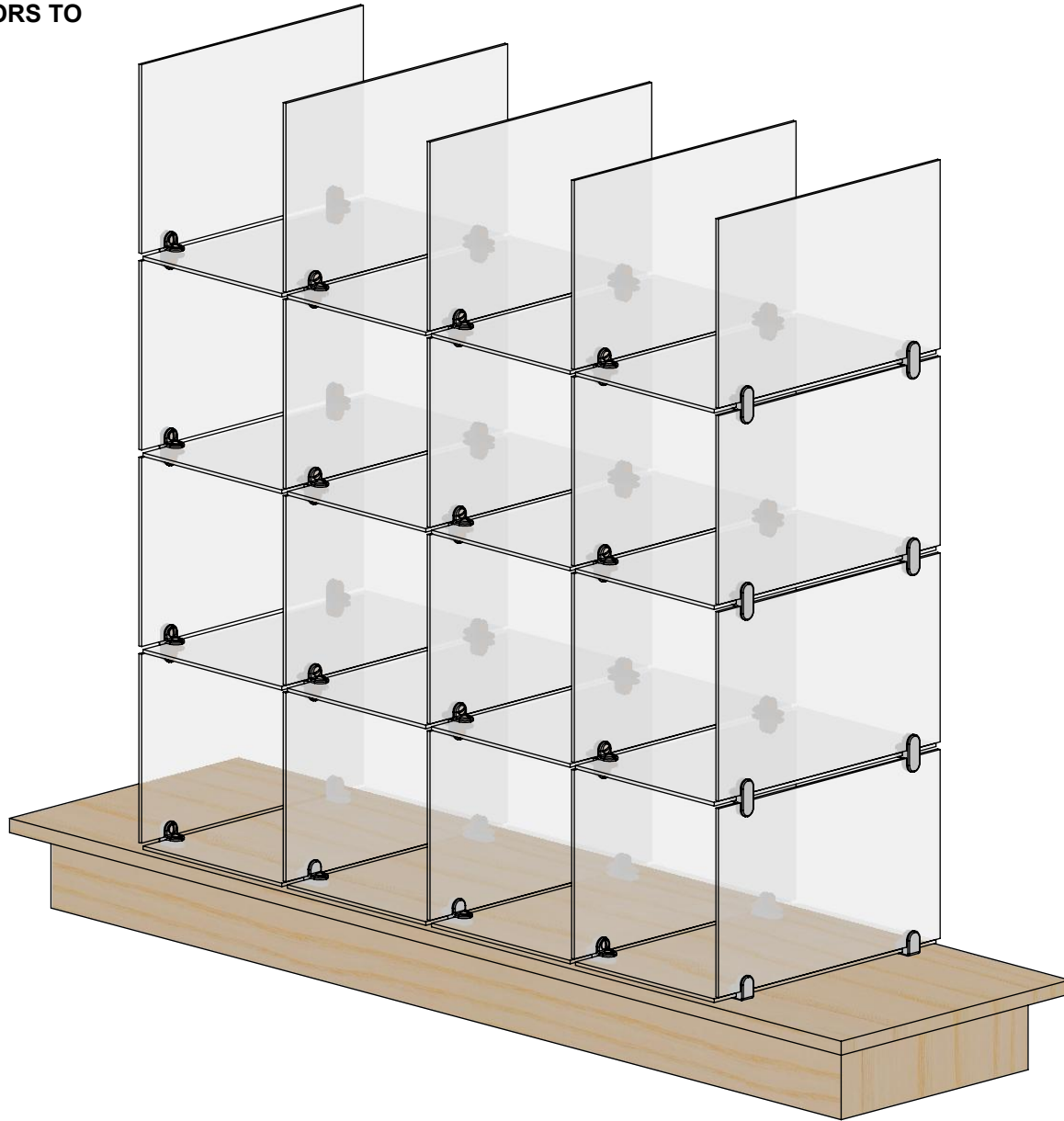
NOTE: TIGHTEN ALL CONNECTORS TO ONE GLASS PANEL AT A TIME.



4

REPEAT STEPS 2 AND 3 UNTIL 4 ROWS HAVE BEEN ASSEMBLED.

NOTE: TIGHTEN ALL CONNECTORS TO ONE GLASS PANEL AT A TIME.



23X
GLASS PANELS

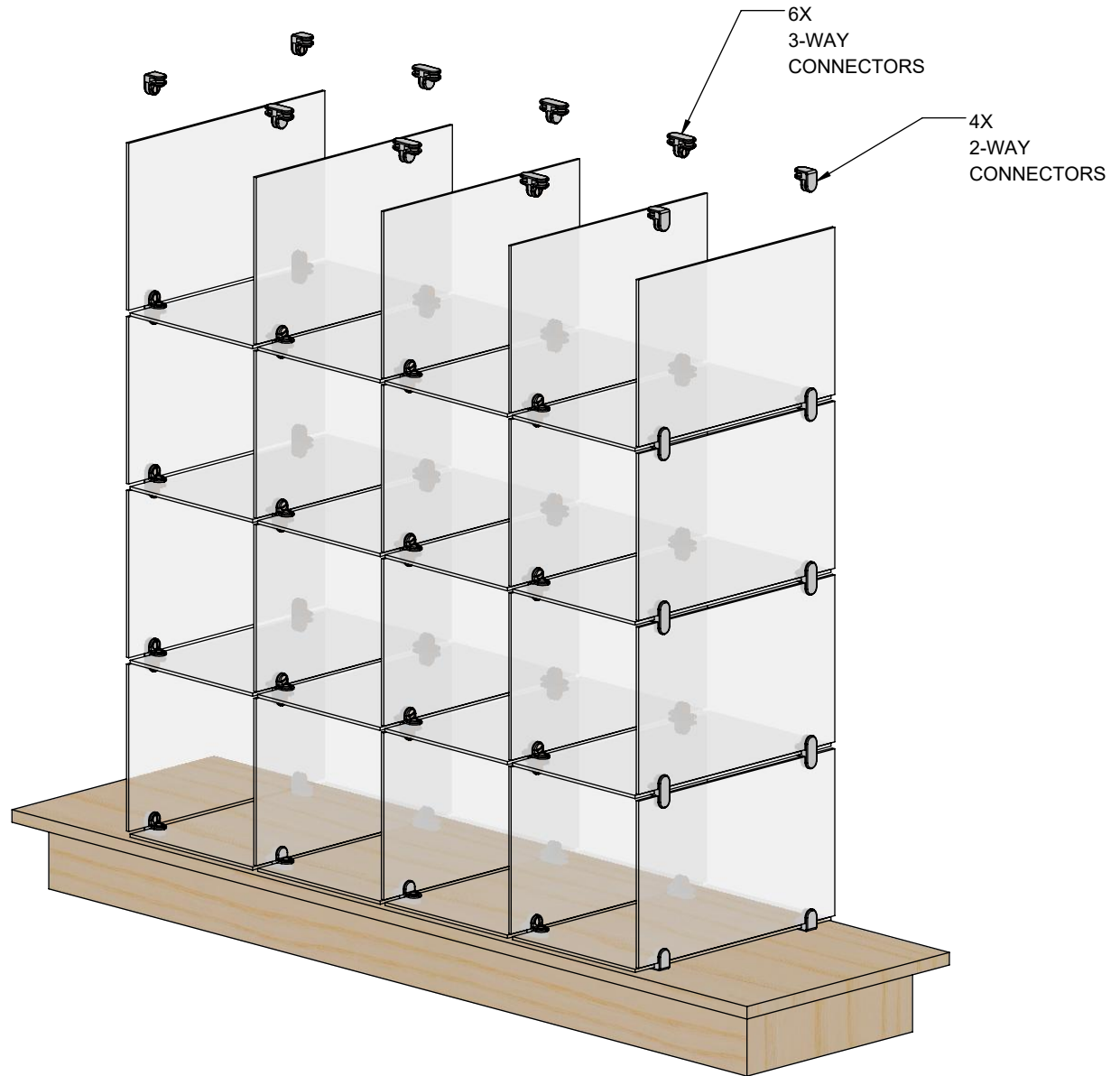
6X
4-WAY
CONNECTORS

8X
3-WAY
CONNECTORS

5

PREPARE FOR THE CEILING OF THE GLASS TOWER BY INSTALLING THE REMAINING 3-WAY AND 2-WAY CONNECTORS AS SHOWN.

NOTE: TIGHTEN ALL CONNECTORS TO ONE GLASS PANEL AT A TIME.



6

SLIDE IN THE FINAL ROW OF GLASS SHELVES AS SHOWN.

NOTE: TIGHTEN ALL CONNECTORS TO ONE GLASS PANEL AT A TIME.

